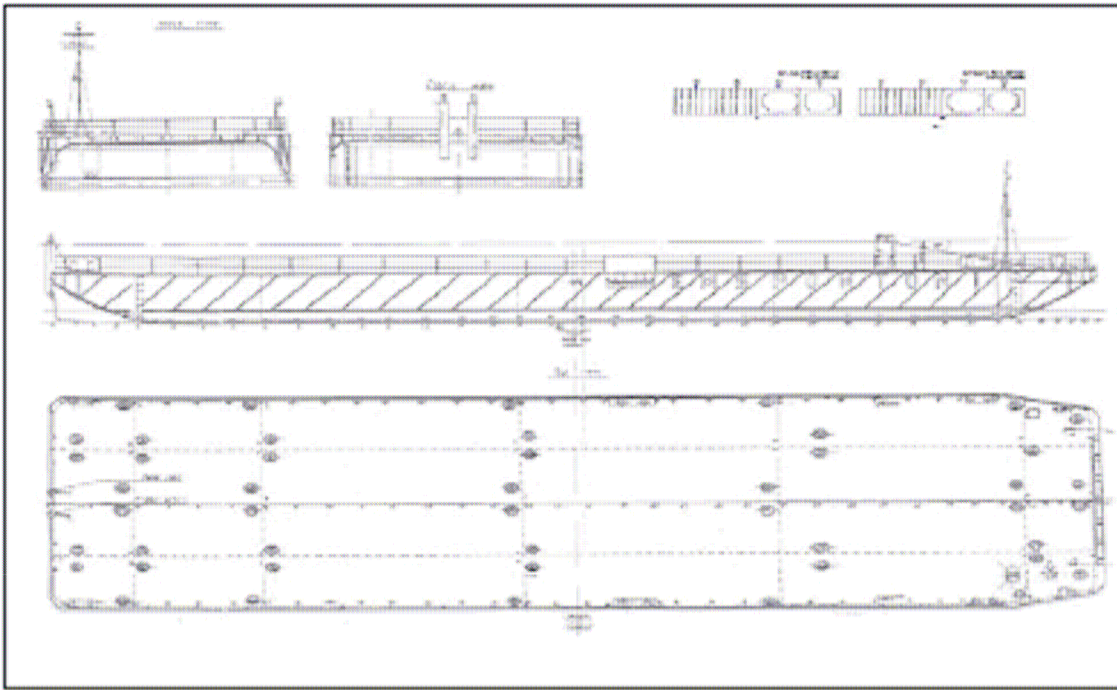


P3



Ocean S.r.l.

Flat top deck barge



Main Data	
Length overall	65,30 mt
Beam over all	15,00 mt
Depth moulded	3,30 mt
Ligth draft	0,65 mt
Loaded draft	2,54 mt
Built	2004 Russia
Tonnage GT/NT	789/239

Class
G.L. + 100 A5 deep sea

Capacities	
Deadweight	1.700 T
Deck load	8 T/m ²
Wheel load	12 T at 10 bar
Point loads	60 T at webframes 80 T at bulkheads 200 T at bulkhead cross
In total 68 lashing eyes	BL: 50,0 T

Arrangement & form	
Bow	Raked, Ro Ro connection
Stern	Raked with 2 skegs, 2 pushpipes aft.
Bulkheads	3 longitudinal, 5 transverse
In total 24 compartment of which 23 can be used for ballast water. Each compartment with 2 covers, deckplug & sounding pipe. One compartment for chainlocker (Stb) One compartment for dtorage (PS) Deck completely flush Removable railing around Removablesignal mast and anchor winch. Position & stern lights: Gas	

Mooring & towing	
Anchor	SHHP 237 kg
Anchor chain	151,25 m Ø 20,5 mm
Anchor winch	Manual / with warping head
Towing arr.	2 smith brackets & fairleads
Bollards	Double bollards fore & aft. Double bollard flush at fr. 19