

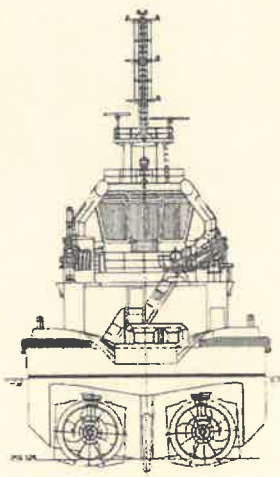


MAIN DATA (*)

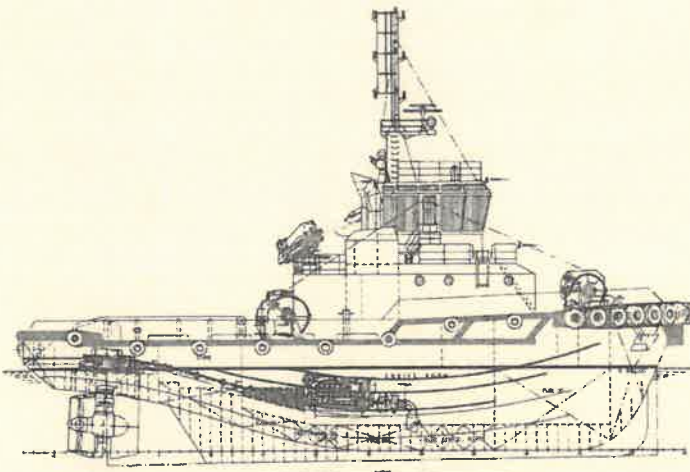
Tug type	Asd Ocean Going	Power	4.200 Kw
Tug function	Towage, harbour tug, Escort Re coil F.P. + 60°, FIFI 1, water spraying	Fire fighting	FFS 2 monitors 2700 m ³ /h - 130 mt
Shipbuilding yard	Bogacici Denizcilik Istanbul	Generator	2 Caterpillar C6.6 100 Kw 1 Caterpillar C4.4 55 Kw
Built/Delivery	2014	Propulsion type	2x Schottel SRP 1515 CPP
Flag/Port of registry	Italy/Trieste 801	Towing hook	2 x Data Makina 70 t
Lenght o.a.	32,50 m	Wire capacity	800+400 m Ø 52 mm
Breadth	11,70 m	Radio apparatus	GMDSS A3
Maximum draught	5,60 m	Navigational equip.	2 Radar DECCA Vision Master, 2 GPS R4, Giro compass Mk2, Navtex, Navipilot
Gross/Net tonnage	466 / 139	Fuel oil capacity	265,68 m ³
Bollard pull	74 tons	Rec-oil capacity	86,76m ³
Call sign/imo No.	IJHU2 / 9747003	Fresh water capacity	25,8 m ³
Accommodation	for max 10 people	Foam capacity	8,76 m ³
Class notation	BV, I HULL MACH Escort tug; salvage tug; Fire fighting ship 1 -water spraying; Oil recovery ship Unrestricted navigation AUT-UMS, AUT-PORT, INWATERSURVEY	Main deck area	120 m ³
Max Tug speed	14 Knots	Navigation	Unrestricted
Main engine	Caterpillar 2x3516 B 2.100 Kw		

(*) For all other informations, drawings, ect. pls contact main office TRIPMARE, Via Felice Venezia 1, Trieste, Italy

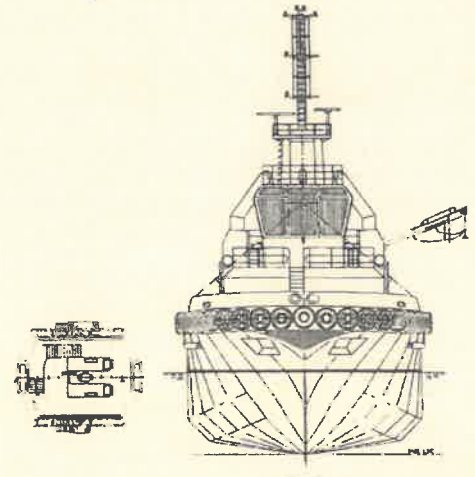
N.B.: Whilst care has been taken in the preparation of these documents, the data and/or information referred to herein are purely indicative and are not contractually binding. They must be checked with reference to the specific operations and are subject to change. No liability is accepted by the owners for any errors which may exist in this document.



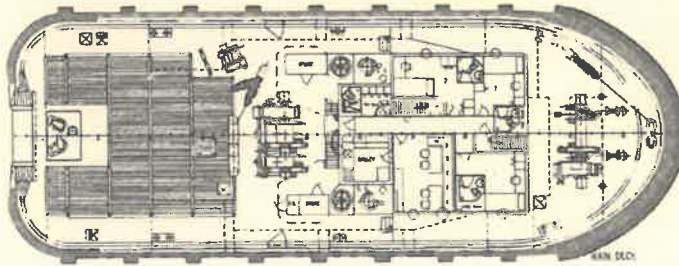
AFT ELEV



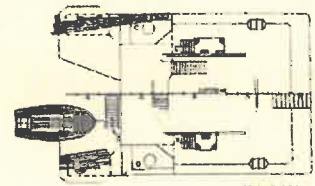
STARBOARD ELEV



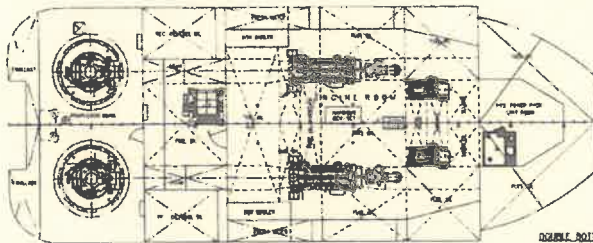
BOW ELEV



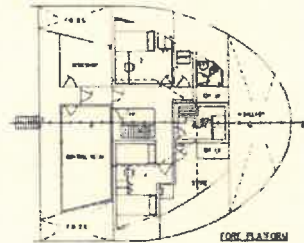
MAIN DECK



BRIDGE DECK



DOUBLE BOTTOM



FORE PLATFORM