



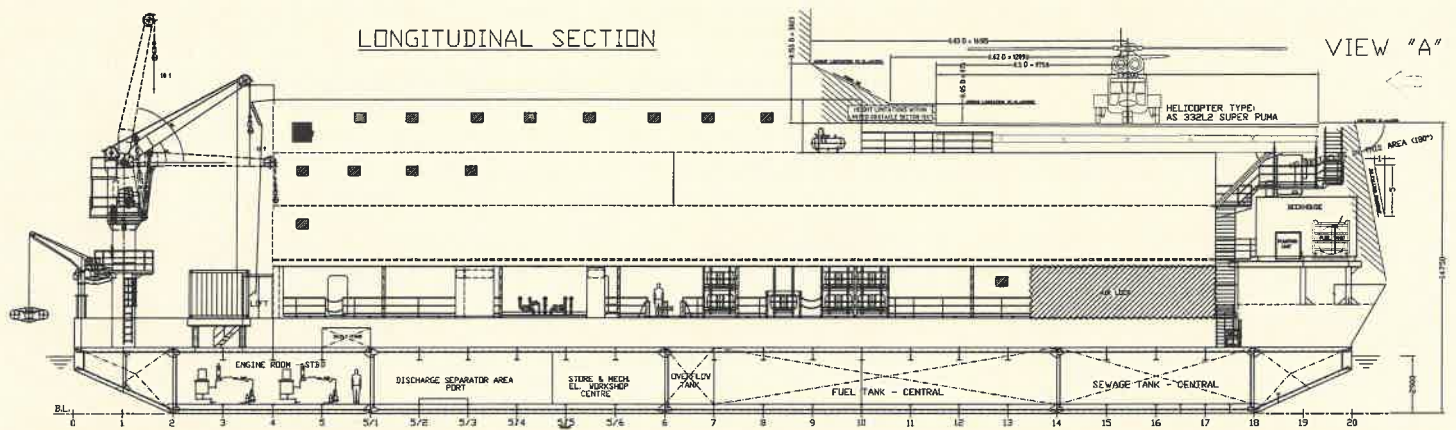
Accommodation Barge P1



MAIN CHARACTERISTICS (*)

BARGE		MAIN DATA	
Vessel Type	ACCOMMODATION BARGE	Length Overall	67.0 m
Year Built	2006	Breadth	16.0 m
Designer	Navalprogetti	Depth at Freeboard Deck	3.35 m
Owner	CASPIAN OCEAN LLP	Depth at Main Deck	4.85 m
Classification Society	RMRS KE 01 Berth Connected Ship (Floating Hostel) RINA C HULL · MACH 00 Special Service Accommodation Barge	Max Draught	2.90 m
Max People on Board	270 (crew 10)	GRT	3349
		NRT	1254
CAPACITIES		DECK & AUXILIARY MACHINERYD	
Fresh Water	481 m ³ - 3 Tanks/Endurance 9 days	Deck crane	2 x 10 t @ 8m
Sewage	370 m ³ - 3 Tanks/Endurance 9 days	10' Container Space	4 units
Fuel Oil	330 m ³ - 1 Tank/Endurance 45 days		
Ballast Water	930 m ³ - 8 Tanks		

(*) For all other informations, drawings, ect. pls contact main office CASPIAN OCEAN LLP - Tel/Fax: +7(7292) 54 52 28 / +7(7292) 54 52 30E-mail: office@caspianocean.kz
 N.B.: Whilst care has been taken in the preparation of these documents, the data and/or information referred to herein are purely indicative and are not contractually binding.
 They must be checked with reference to the specific operations and are subject to change. No liability is accepted by the owners for any errors which may exist in this document.



OTHER CHARACTERISTICS

TEMPORARY REFUGE

Location	Messroom + Changing Room + Public Toilet (Main Deck)
Year Built	2012/2013
Persons in Refuge	270 (full POB)
Entering Time for TR	15 min for full POB
Operating Time	2 hr
Gross Area	288 m ²
Airlocks	3 units
Overpressure	50 Pa inside TR, 25 Pa inside Airlocks
TR Control facilities	Control Room (2 UPS, 1 ESD, Control Panel), Toilet Independent FW Tank
TR Toilet facilities	3 x WC, 2 x Showers

MAIN FEATURES

Gas Sensors	H2S - CH4 (x 74 All Around the Vessel)
Reduction Panels	2 x TR Pressure Regulator 3 x AL Pressure Regulator 5 x Breathing Air Cascade
Fire Fighting System inside TR	Portable Fire Extinguishers -POWDER 6 Kg Portable Fire Extinguishers -CO2 5 Kg
FiFi System outside TR	HP Nebula System
Communic. Point to each Air Lock	Equipped
EEBD	300x22 min C.ty Dräger Emergency Escape Breathing Apparatus 22 x 45 min Capacity
Immersion / Survival Suit	300 pcs
Emergency Drinking Water	Bottled Water in Messroom and Changing Room

TR AND AIR LOCKS AIR SUPPLY SYSTEM MAIN DATA

Dedicated Deckouse	350 Bottles / 300 bar
	Thermal Insulation for External Temperature of -35°C/+42°C
	Internal Heater
	Emergency Lighting System (4hrs backup) Structural protection against blast (0.2 bar)
Air Compressor	2 units (1900lt/min-350 bar-Air Bottle Recharging System)
Air Purification System	2 units

HELIDECK

FACILITIES

Size	Octagonal shape D=19.5 m
Approved load	9.30 t
Rules & Regulation	UK CAA CAP 437, RMRS Rules
Helicopter type Capability	Super Puma AS 332L2
FiFi System	Foam Polifilm K3
NATO Helicopter Start Unit	1 unit

HELIDECK OPERATIONS

Maritime Observation System (Core and Data Logger)	1 x Vaisala MAWS-420 and QML-201C
Visibility Sensor	1 x Vaisala PWD22
Water Level Sensor	1 x Vaisala Vega Plus QHR-104
Motion Sensor	1 x SMC IMU-108
	Roll/Pitch - Tri-axes Accelerations (XYZ) Heave - Surge/Sway
Helideck Monitoring System	1 x SW Vaisala

REFUELLING STATION

Type	in accordance with International Standards IMDG, DNV 2.7-1, EN12079 and CAP 437
Tank	2900 Liters

ACCOMMODATIONS & FACILITIES

Wi-Fi Connection	All Accommodation Areas
Cabin Accommodations	270 p. tot.
	62 x 4 people
	2 x 2 people + 6 x 1 person
	3 Suites (Day + Night Area) 1 Flat TV x cabin

ACCOMMODATIONS & FACILITIES

Gym	1 x 32 m ²
Sauna	1 x 4 people capacity
Recreation Area	2 units (Big Flat TV x Area)
Phone Room	2 units
Meeting Room	1 unit
Mess room	seats: 136 people
Locker Room	1 x abt. 150 pcs
Ambulatory	3 units
Office	4 units
Store	3 units

FIRE FIGHTING FACILITIES

Fire extinguishers	22 x Powder 6 Kg + 17 (spare)
	5 x CO2 5 Kg + 5 (spare)
	4 x CO2 10 Kg
	2 x Powder 45 Kg
	1 x Foam 45 L
	1 x Portable Foam Applicator 20 lt Tank
	2 x Water Fog Applicator
HPN Nebula	All Accommodation Areas & Engine Room
FiFi	22 x Fire Hoses & Nozzle Box
Detector	177 x Smoke
	4 x Heat (HHT =Very High Temperature)
	3 x Heat (Higher than 80 C°)
	2 x Flame
H2S + CH4 Gas Detector System	All Areas
International Shore Connection	2 units

LIFE SAFE APPLIANCES

Life Raft	14 x 25 people
Life Jackets	346 pcs
Life Buoys	8 pcs
Rescue Boat	1 x 6 people (with Dedicate Crane)
Immersion Suit	20 pcs
EEBD	300 pcs in TR (Changing Room)

MOORING

Anchor HHP	2 x 1575 Kg
Mooring Rope	4 x 160 m, Ø40 mm (polypropylene)
Electrically Anchor Windlass	2 x 100 kN
Electrically Capstan	1 x 50 kN

ENGINE ROOM MACHINERY

Diesel generators	5 x 260 kW/1500 rpm
Emergency Diesel Generators	1 x 150 kW/1500 rpm
Hot Water Boilers	2 x 3000 lt/h - 60 C° - 170 kW
Fire Fighting Pump	1 x 80 m ³ /h x 40 mt - 2900 rpm
Fresh Water Generators	4 x 50 m ³ /day
Taifun System - Waste Galley Discharge	1 x cap 2200 lt -150 lt/min -100 bar

COMMUNICATION EQUIPMENT

Radar Plant -X-Band Radar Antenna + Integrated Transceiver	1 x Furuno/Elettronica Navale XN-20AF
Navtex Receiver	1 x Furuno
Satellite Communic. Mini STD M Equipment	1 x Thrane&thrane
VHF Radio Plant -Marine VHF	2 x Furuno/E.N. FM-8800S
Radiotelephone Transceiver	
MF/HF Radio Equipment	1 x Furuno/Elettronica Navale

NAVIGATION EQUIPMENT

Wind Gauging Equipment	1 x Radio Ocean/E.N.
Automatic Identification System - AIS	1 x Furuno/Elettronica Navale FA-150I
GPS Navigator	1 x Furuno/Elettronica Navale GPA-017S