



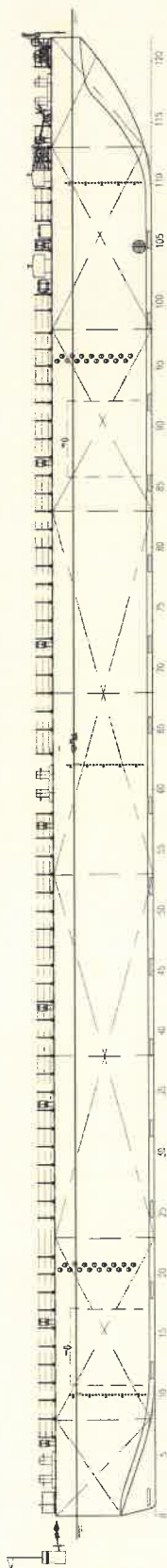
MAIN DATA (*)

| | | | |
|-----------------------|--|---------------------|------------------------------|
| Barge type | Ballastable Deck Cargo Pontoon | Horse power | N.A. |
| Barge function | Deck cargo, Roro cargo | Fire fighting | N.A. |
| Shipbuilding yard | Nanton Yahua Shipbuilding Co. Ltd Scheepswerf Damen Grichem | Pumps ballast | 2 x 400 m ² /hrs |
| Built/Delivery | 2015 | Ballast tank | 17 pcs 13.751 m ³ |
| Flag/Port of registry | Sloveia / Koper | Propulsion type | N.A. |
| Lenght o.a. | 91,50 m / 300 ft | Deadin/Max capacity | 9600 ton |
| Breadth | 27,40 m / 900 ft | Deck load | 20 ton/m ² |
| Maximum draught | 4,85 m | Generator | Caterpillar C4.4 94 Kw |
| Gross/Net tonnage | 4161 / 241 | | |
| Bollard pull | N.A. | | |
| Call sign/imo No. | 9695389 | | |
| Accomodation | N.A. | | |
| Class notation | DNV - GL - 100 AT Pontoon | | |
| Max Tug speed | N.A. | | |
| Main engine | N.A. | | |

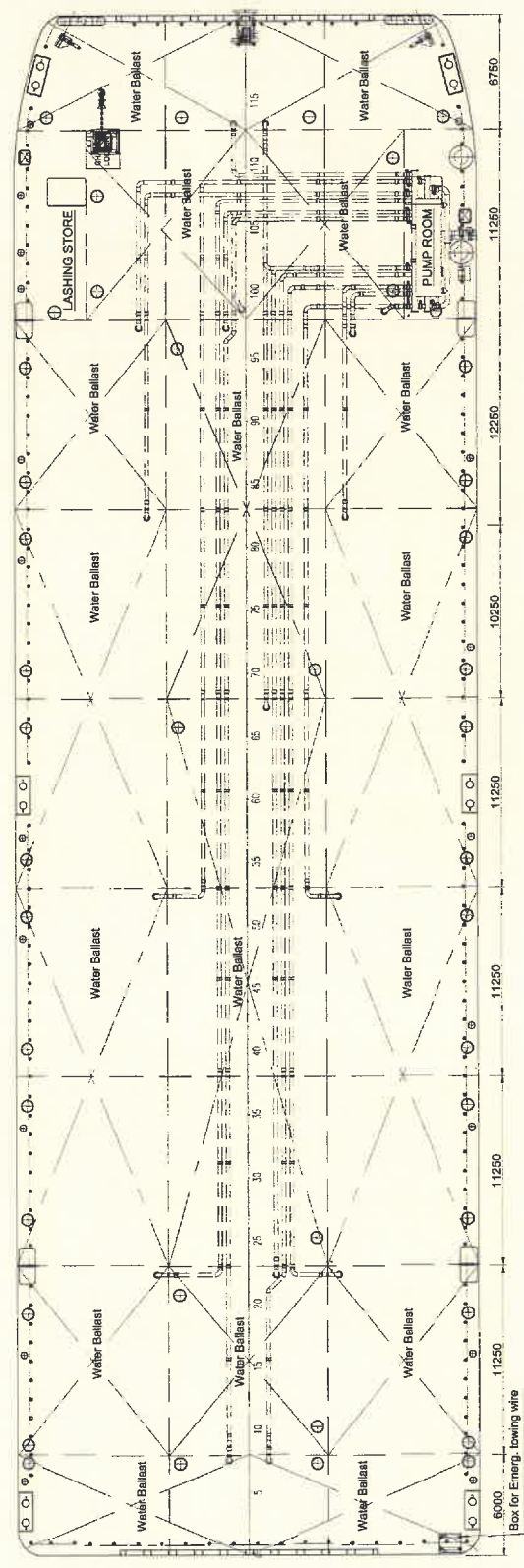
(*) For all other informations, drawings, ect. pls contact main office in Koper, Slovenia

N.B.: Whilst care has been taken in the preparation of these documents, the data and/or information referred to herein are purely indicative and are not contractually binding. They must be checked with reference to the specific operations and are subject to change. No liability is accepted by the owners for any errors which may exist in this document.

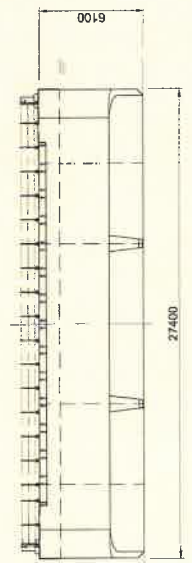
SIDE VIEW



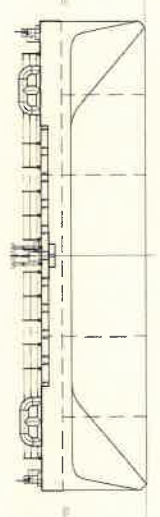
TOP VIEW



AFT VIEW



FRONT VIEW



8000
Box for Emerg. lowering wire