

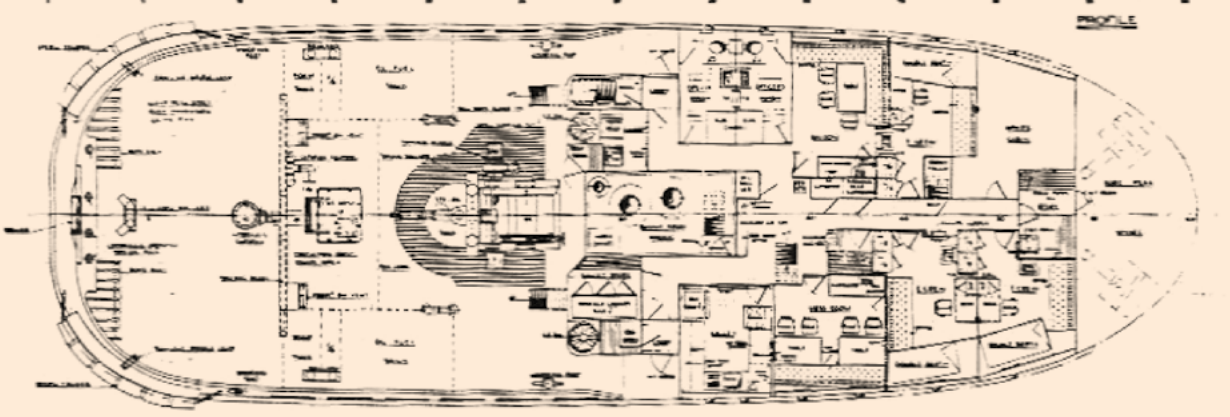
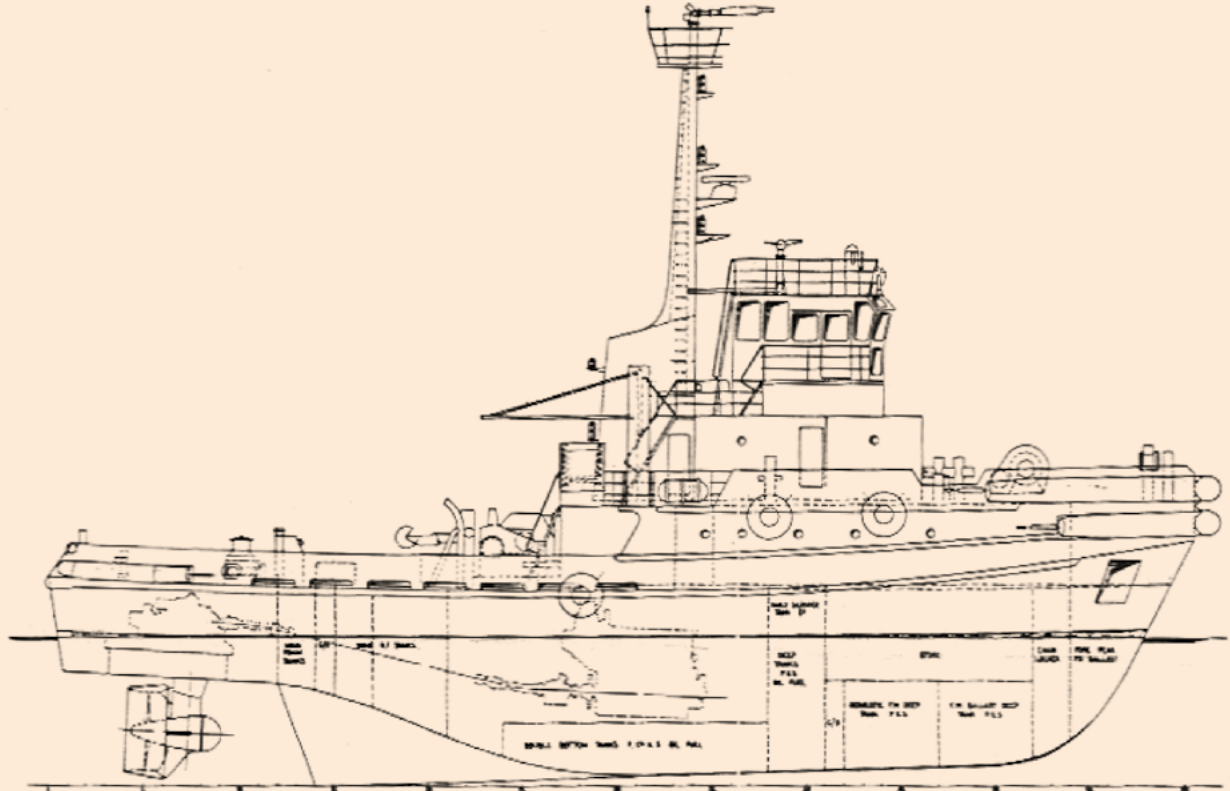


MAIN DATA (*)

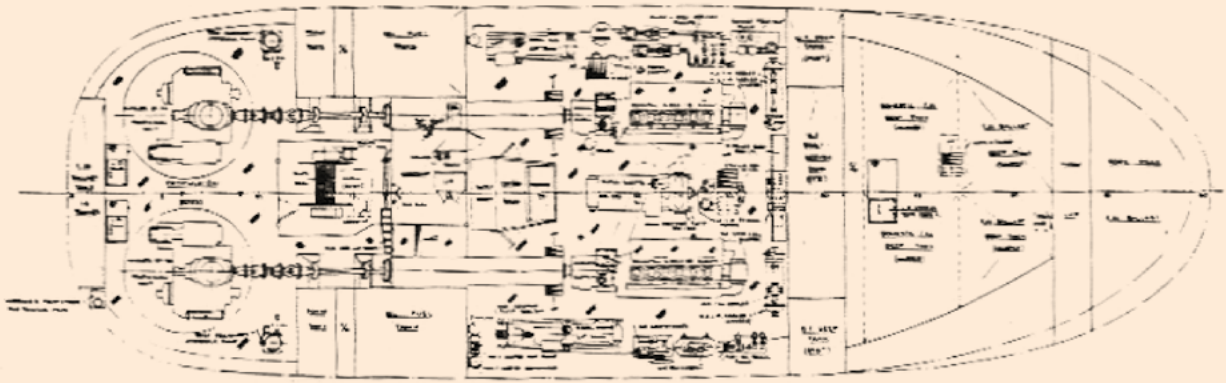
Tug type	Asd Ocean Going	Horse power	2685,6 Kw
Tug function	Ocean and harbour towage	Fire fighting	FI FI
		Generator	2 x Diesel alternator set each 125 Kw
Shipbuilding yard	Tamar steel boat Tasmania, Australia	Propulsion type	Nigata Z - Peller azimuth thrustel, N. 2 fixed pitch propeller in kort nozzle
Built/Delivery	1982		
Flag/Port of registry	Montenegro, Bar	Towing hook	Mechanic towing hook 60 t
Lenght o.a.	32,00 m	Wire capacity	600 m dia 48 mm
Breadth	10,60 m	Radio apparatus	GMDSS A2
Maximum draught	4,51 m	Navigational equip.	2 x Radars , Echosounder, Gypocompass, Magnetic Compass, Autopilot, 2 GPS
Gross/Net tonnage	422 / 126		
Bollard pull	45,27 t		
Call sign/Imo nr.	4ODK / 8116439	Fuel oil capacity	140 mt
Accomodation	Max 12 persons	Rec-oil capacity	4500 lt
Class notation	RINA Tug; Unrestricted Navigation	Fresh water capacity	50 m ³
Max tug speed	13,0 Kn	Foam capacity	28 m ³
Main engine	N. 2 Daihatsu type DSM-28 at 700 RPM	Maian deck area	n.a.
		Navigation	Unlimited

(*) For all other informations, drawings, ect. pls contact main office in Trieste, Italy

N.B.: Whilst care has been taken in the preparation of these documents, the data and/or information referred to herein are purely indicative and are not contractually binding. They must be checked with reference to the specific operations and are subject to change. No liability is accepted by the owners for any errors which may exist in this document.



PLAN AT MEN DECK



PLAN BELOW MEN DECK